

Locking Ladder Pulls



Lock mechanism located at 42-5/8" A.F.F.

Floor Locking Only



Easy to operate Thumbturn



Dust Proof Keeper

STANDARD SPECIFICATIONS

- » 1-1/4" diameter stainless steel tubing
- » Available lengths: 48", 60", 72", & 84"
- » Back-to-back mounting
- » Brushed stainless steel finish
- » Floor locking only; Dust proof keeper included
- » CRL Rim Cylinder Housing for 7-pin SFIC; Brushed stainless steel finish
- » CRL 7-pin Small Format Interchangeable Core (SFIC); Brushed nickel finish
- » Keyed Different - 10 different key configurations
- » Keyed Alike Option - Available upon request
- » Master Keying - Responsibility of the Customer

CYLINDER + CORE OPTIONS

SFIC | NON-CRL CORES

- » CRL Rim Cylinder Housing accepts most 7-pin SFIC cores; Subject to verification
- » Non-CRL cores must be supplied + installed by the Customer
- » Customer responsible for keying of Non-CRL cores

LARGE FORMAT INTERCHANGEABLE CORE (LFIC)

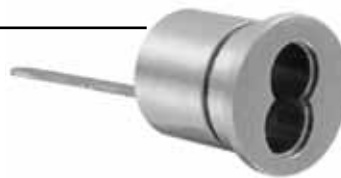
- » Rim Cylinder Housings for LFIC cores must be supplied + installed by the Customer
- » LFIC cores must be supplied + installed by the Customer
- » Customer responsible for keying of LFIC cores
- » Requires pull to be removed from door and partially dismantled

APPLICATION GUIDELINES

- » Track can be mounted inside or outside office
- » Single + Double Sliding Frameless Glass Doors
- » Single + Double Full Height Pivot Frameless Glass Doors
- » Single Transom Height Pivot Frameless Glass Doors



The Locking Ladder Pull has a removable rim cylinder housing.



Rim Cylinder Housing for 7-pin SFIC



CRL 7-pin SFIC

Non-Locking Ladder Pulls



STANDARD SPECIFICATIONS

- » 1-1/4" diameter stainless steel tubing
- » Available lengths: 48", 60", 72", & 84"
- » Back-to-back mounting
- » Brushed stainless steel finish

APPLICATION GUIDELINES

- » Not interchangeable with Locking Ladder Pulls (requires different door prep)
- » Single + Double Sliding Frameless Glass Doors
- » Single + Double Sliding 1-3/4" Thick Doors
- » Single + Double Full Height Pivot Frameless Glass Doors; Supplied with Spring Latch(es)
- » Single + Double Full Height Pivot 1-3/4" Thick Doors; Supplied with Floor Mounted Closer(s)
- » Single Transom Height Pivot Frameless Glass Doors; Supplied with Floor Mounted Closer(s)
- » Single Transom Height Pivot 1-3/4" Thick Doors; Supplied with Floor Mounted Closer(s)



STANDARD SPECIFICATIONS

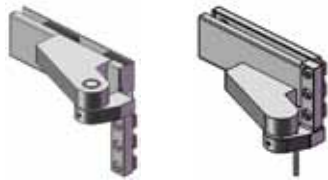
Image	Description	Finish
	Adjustable Clamp Shoes	Raw Aluminum
	Clamp-Shoe Clip-On Cover	Painted Per Order
	Double Roller Running Gear	N/A
	Floor Guides	Painted Per Order
	Sliding Door Track	Painted Per Order
	Sliding Door Track Fascia and End Caps	Painted Per Order
	Track Stopper w/ Adjustable Spring	Gray Plastic

Quantities vary based on single or double frame conditions.



PIVOT HINGE SET | FRAMELESS GLASS DOORS

- » Top + bottom pivot knuckles with patch fittings
- » Satin stainless steel finish



PIVOT HINGE SET | 1-3/4" THICK DOORS

- » Top + bottom pivot knuckles
- » Satin stainless steel finish



LEVER LATCHSET

- » Rectangular lockset body with cover plates; DIN 18251 | Class 4
- » Ergonomic lever handles meet ADA requirements
- » Anodized aluminum finish



LEVER LOCKSET

- » Rectangular lockset body with cover plates; DIN 18251 | Class 4
- » DIN Euro Profile Cylinder (PZ); C-Type Keyway; 5-pin
- » Ergonomic lever handles meet ADA requirements
- » Anodized aluminum finish
- » Keyed Different

KEYING OPTIONS

- » Keyed Alike - Up to 20 different key configurations; Additional charges apply
- » Master Keying - Includes [1] Master Key; Available as Special Request only; Additional charges apply; Extended lead time apply; Customer must supply a detailed keying schedule (in DHI format); Grand Master Keying unavailable



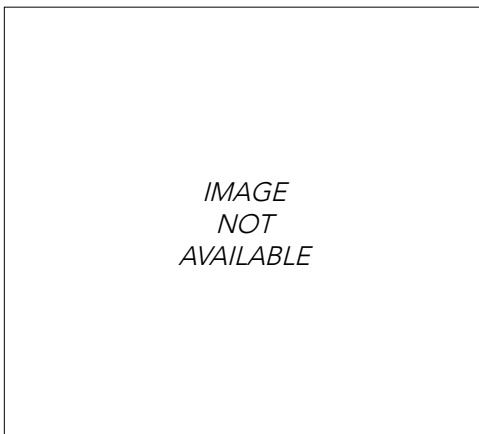
DUMMY STRIKE BOX | W/O LEVERS

- » Rectangular strike body with cover plates; DIN 18251 | Class 4
- » For use on inactive leaf of double doors with lockset
- » Anodized aluminum finish



LEVER LATCHSET

- » Mortise lock body (ANSI A156.13, Series 1000, Mortise Locks and Latches, Grade 1); 2-3/4" Backset
- » 2-3/16" Hard edge rose
- » Passage function (ANSI Code F01)
- » Ergonomic lever handles meet ADA requirements
- » Anodized aluminum finish

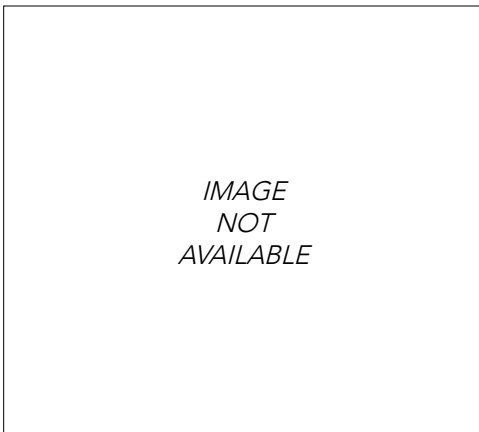


LEVER LOCKSET

- » Mortise lock body (ANSI A156.13, Series 1000, Mortise Locks and Latches, Grade 1); 2-3/4" Backset
- » 2-3/16" Hard edge rose
- » Office function (ANSI Code F04)
- » Mortise cylinder; C-Type keyway; 5-pin
- » Ergonomic lever handles meet ADA requirements
- » Anodized aluminum finish
- » Keyed Different

KEYING OPTIONS

- » Keyed Alike - Additional charges apply
- » Master Keying - Includes [1] Master Key; Up to 6 levels; Available as Special Request only; Additional charges apply; Extended lead times apply; Customer must supply a detailed keying schedule (in DHI format); Grand Master Keying unavailable



DUMMY STRIKE BOX | W/ ACTIVE LEVERS

- » Mortise strike body (ANSI A115.1); 2-3/4" Backset
- » 2-3/16" Hard edge rose
- » Operative dummy handles both sides
- » For use on inactive leaf of double doors with lockset
- » Ergonomic lever handles meet ADA requirements
- » Anodized aluminum finish

HARDWARE



FLOOR MOUNTED DOOR HOLDER

- » For use on frameless glass doors
- » For use with inactive leaf of double doors
- » Satin stainless steel finish



ELECTROMAGNETIC LOCK

- » For use on frameless glass doors
- » Magnetic bond sensor
- » Door position switch
- » Relock time delay
- » Anti-tamper switch
- » Brushed aluminum finish



FLUSH BOLT

- » For use on 1-3/4" thick doors
- » Meets ANSI/BHMA A156.16, L04251
- » For use on inactive leaf of double doors
- » Satin chromium finish

HARDWARE



FLOOR MOUNTED CLOSER

- » For use on either frameless glass or 1-3/4" thick doors
- » Available as No Hold Open or 90° Hold Open
- » Designed to open to a maximum of 180°; Auxiliary stop required to stop the door at less than 180°
- » Brushed stainless steel finish



FLOOR MOUNTED DOOR STOPS

- » For use on either frameless glass or 1-3/4" thick doors
- » Modern style
- » 1-1/4" diameter
- » Available heights: 1-1/2" and 2-1/2"
- » Satin chromium finish